

# SS INTERIORS



ELEVATION



[https://www.instagram.com/ss\\_\\_interiors/](https://www.instagram.com/ss__interiors/)



<https://www.facebook.com/sai.rjy.18>




<https://www.linkedin.com/company/3487053/admin/>

Website:



Address: #89-18-45, Morumpudi Road  
Rajahmundry, 533104.

Mail: [info@ssinterior.co.in](mailto:info@ssinterior.co.in)

 +91 9396966066, 9014461666

## **Natural Stone Cladding**



### Description

A facing of thin stone - limestone, sandstone, slate, marble or granite – additional to the required statutory construction, but not so bonded to that construction as to exert common action under load

Natural stone has been used by man for construction purposes for several thousand years. The main groups of stone of interest can be divided into 3 geological groups:

- 1.Limestone and Sandstone – Sedimentary Rocks
- 2.Slate and Marble – Metamorphic Rocks
- 3.Granite – An Igneous Rock

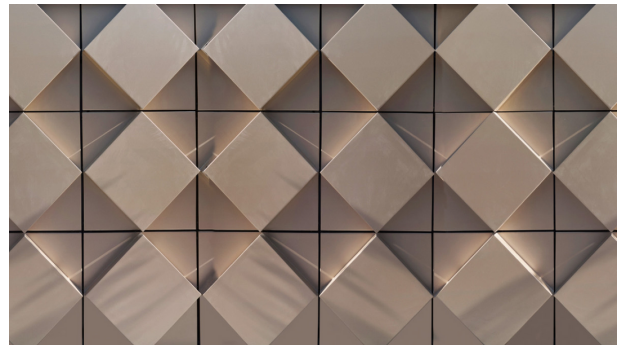
### **Benefits of use natural stone cladding:**

- 1.durable
- 2.aesthetically pleasing
- 3.relatively maintenance free
- 4.low carbon footprint compare to other materials

## **ACP Cladding**

### Description

Aluminium composite panels (ACP), made of aluminium composite material (ACM), are flat panels consisting of two thin coil-coated aluminium sheets bonded to a non-aluminium core. ACPs are frequently used for external cladding or facades of buildings, insulation, and signage.



### Application

ACP is mainly used for external and internal architectural cladding or partitions, false ceilings, signage, machine coverings, container construction, etc. Applications of ACP are not limited to external building cladding, but can also be used in any form of cladding such as partitions, false ceilings, etc. ACP is also widely used within the signage industry as an alternative to heavier, more expensive substrates





## **HPL Cladding**



### Description

High Pressure Laminate (HPL) panels are a form of cladding typically manufactured by layering sheets of wood or paper fibre with a resin and bonding them under heat and pressure. They sometimes include additional chemicals to provide fire retardant properties and are available in a wide range of colours and finishes

### Application

Decorative high-pressure laminates are usually used for furniture tops especially on flat surfaces, including cabinets and tables. Decorative compact laminates are sometimes constructed as toilet cubicle systems, laboratory tables and kitchen tops. Some new usage models include wall panels with conceptual designs and custom prints.

## **Smart Wood Cladding**

### Description

Front elevation wooden Cement Plank is a unique fiber cement composite of natural fibers bonded tightly in a high-grade silicate structure. This autoclaved wood-grain siding acquires impressive toughness, yet remains flexible and dimensionally stable.



### Application

Front Elevation Wooden Cement Plank is simple to handle and easy to install. And these are weather resistance, immune to water resistance, and also termite resistance. Smart wooden boards can be used in gate coverings, wall claddings, and also in false ceilings. We can paint the smart wooden boards with whatever color we want. It is also available in pre-coated colors that are rosewood and teak wood. It gives an elegant look to your home.



## **Stainless Steel Cladding**



### Description

A SS Cladding metal or alloy is a composite product consisting of a thin layer of stainless steel in the form of a veneer integrally bonded to one or both surfaces of the substrate. With casting, brazing, and welding, one of the metals to be joined is molten when a metal-to-metal bond is achieved.

### Application

Stainless steel wall cladding is often used to decorate the exterior of large office buildings or hotels. Stainless steel is easy to use the material and is very easy to install on any facade. Stainless steel wall cladding is often used because of its durability.

## **Pvc/Wpc CNC Cutting**

### Description

WPC Sheets are similar to heavy PVC Foam Boards. They are Rigid PVC Sheets in matte surface finish manufactured using foaming agent to foam the PVC Sheets. These sheets are extruded using Semi-Celuka process. The formulation of these sheets is different from normal Sunboards making them more tough and heavy weight.



### Application

Expanded PVC foam board, also known as expanded polyvinyl chloride (PVC), is a lightweight, rigid form of expanded foam polyvinyl chloride. It is commonly used for commercial purposes like digital and screen printing, laminating, vinyl lettering, signage, and more.





## **Glass Elevation**



### Description

Glass can absorb, refract or transmit light. It has the ability to make any building look more stunning and modern. Using glass in building facades and interiors enhances the ambience. Interiors appear larger and more open, with abundant natural lighting.

### Application

Homes, Partitions, Commercial places uses glass for elevation purpose because glass is clear and very strong and stable substance. Sliding doors and windows also uses glass for their transparency and toughness.



# Gallery

## Natural Stone





Aluminum Composite Panel(ACP)





High Pressure Laminate (HPL)





Address: #89-18-45, Morumpudi Road, Rajahmundry, 533104

Mail: [info@ssinterior.co.in](mailto:info@ssinterior.co.in)

☎ +91 9396966066, 9014461666



SS INTERIORS

